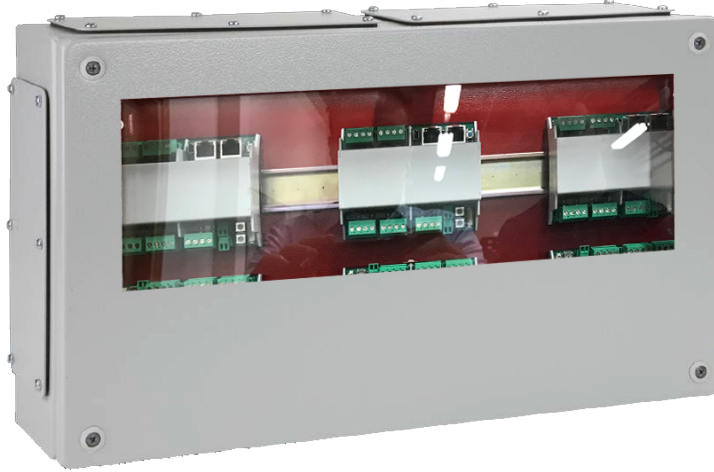
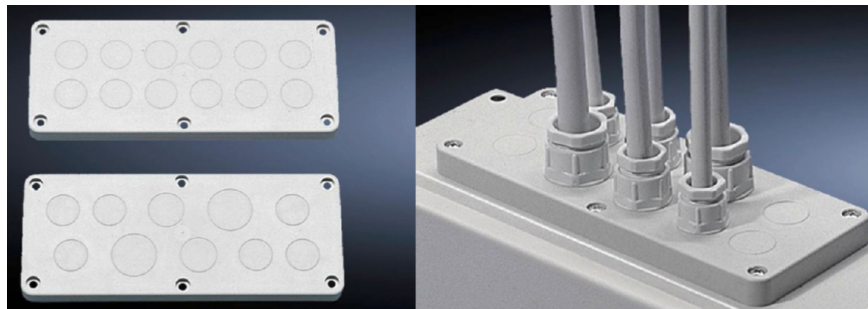


## COMPACT- 4E-TBOX-W - TERMINALBOX



**ABS pre-punched PG plates**



**Product description:**

4E-Terminal box, WHD: 500x300x120 mm, Sheet steel, without mounting plate, with cover, with gland plate, with pre-punched plates, with DIN-RAIL

Item	4E-TBOX	Punched plate
Colour	RAL7035	RAL7035
Dimension	500x300x120mm (WxHxD)	220x90mm (WxD)
Window	300x200mm (WxHxD)	
Material	Sheet steel	ABS
Included		1
	6x Sheetsteel coverplates	5
	2x DIN-RAIL	

## COMPACT- 4E-TBOX - TERMINALBOX

Product description - TBOX	
Material	Enclosure Sheet steel Cover: Sheet steel, all-round foamed-in PU seal
Surface finish	Enclosure and cover: Dipcoat primed, powder-coated on the outside, textured paint
Protection category NEMA	NEMA 12
Supply includes:	Enclosure with cover, Quick-release fastener including plastic bushes, Quick-release fastener including plastic bushes
Material thickness	Enclosure: 1.38 mm Cover: 1.25mm
Gland plates:	Size/Qty. (top/bottom): 2 / 2 + 2 Size/Qty. (left/right): 2 / 1 + 1
Weight	5.2 kg
Customs tariff #	85389099
Product description - Plastic cable gland plates	
Material	ABS
Protection category IP to IEC 60 529:	IP 55 if installed correctly
Window	Polycarbonate with rubber sealing
Cable entry:	Number x PG diameter: 12 x 13.5
Weight/pack:	0.6 kg (Package of 5pcs)
Customs tariff #	73269098